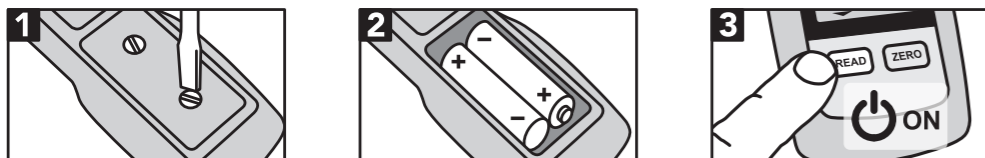
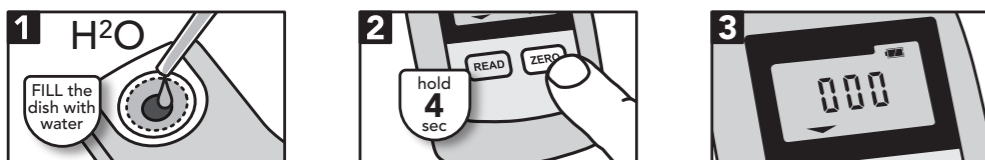


Quick Start Guide

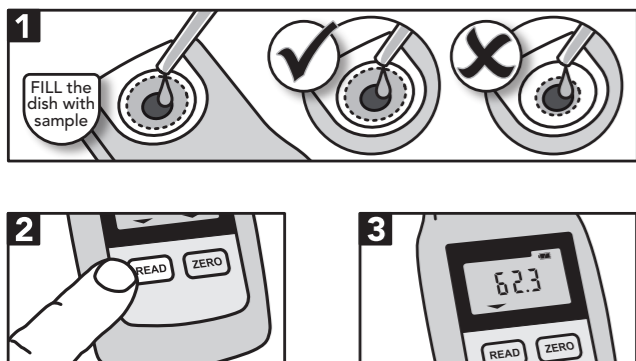
Installing batteries



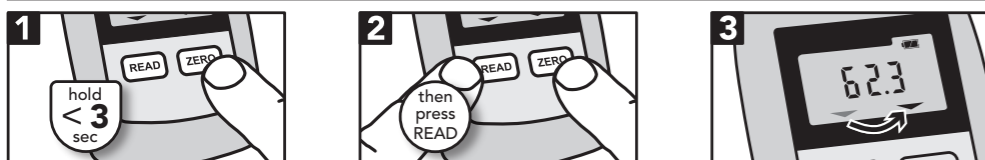
Zero calibration



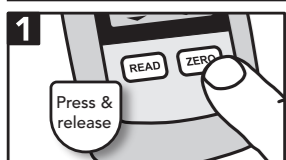
Taking a reading



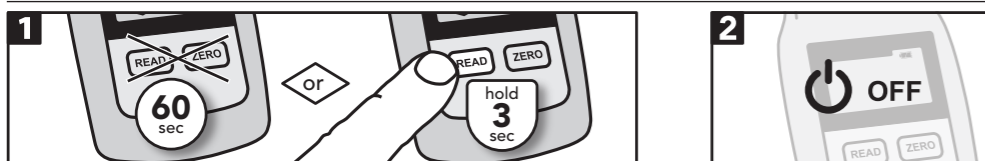
Changing measurement scale



Displaying the measurement temperature



Turning off

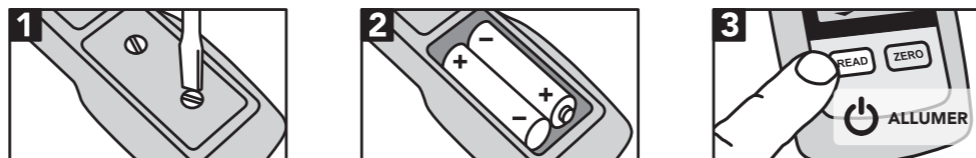


Manufacturer's details

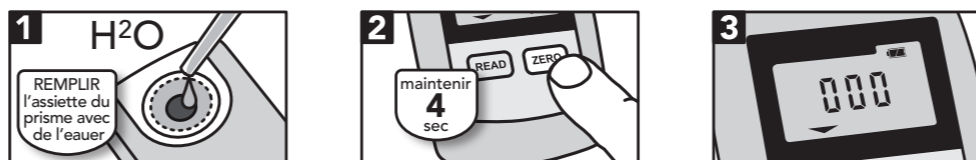


Guide de Démarrage Rapide

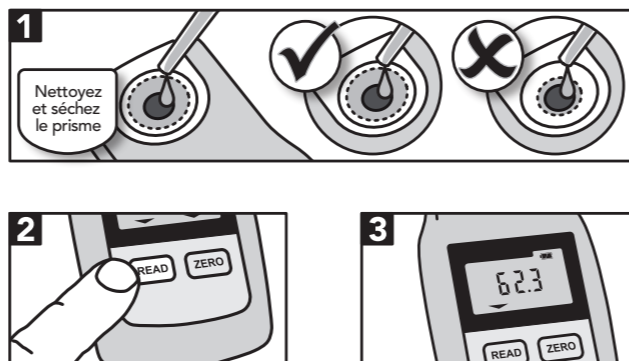
Installation des piles



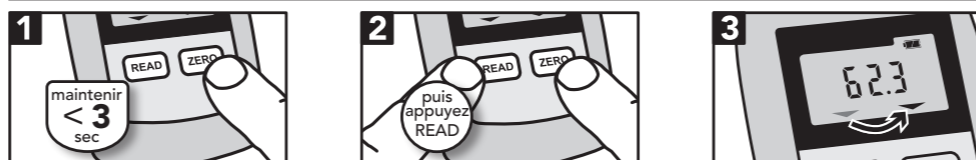
Calibrage zéro



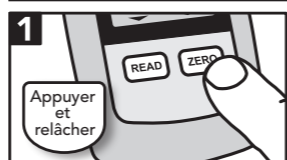
Procéder à la lecture



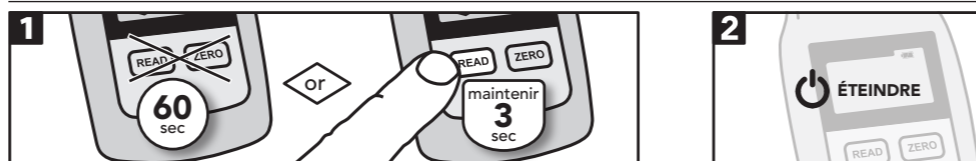
Changer l'échelle de mesure



Affichage de la température de mesure



Eteindre

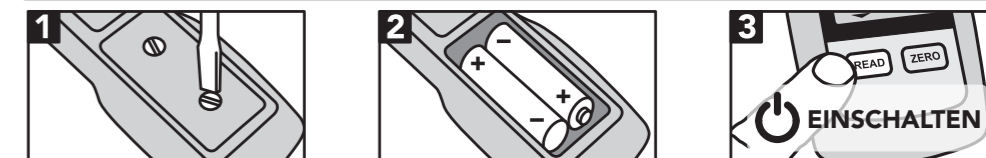


Coordonnées du fabricant



Schnellstartanleitung

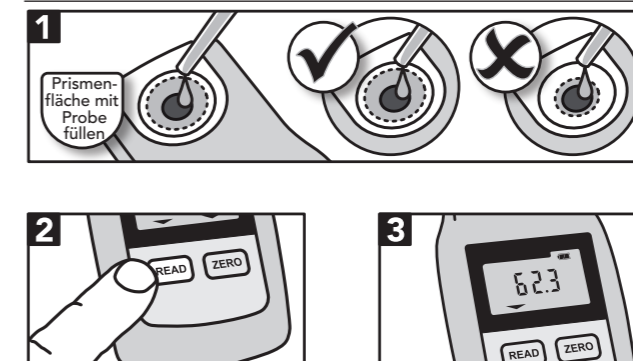
Batterien einsetzen



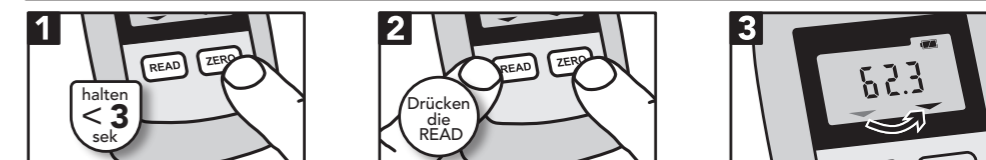
Nullstellung kalibrieren



Meßwert ablesen



Meßwertskala ändern



Anzeigen der Temperatur



Gerät ausschalten

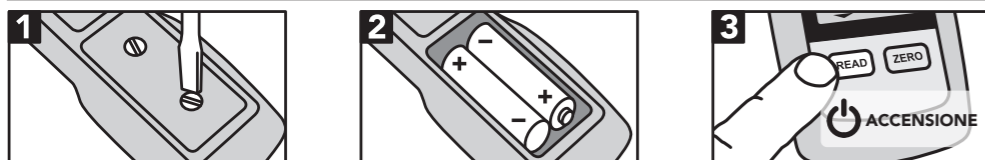


Herstellerangaben

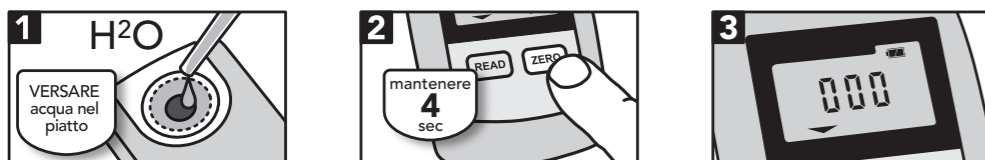


Guida d'Avvio Rapido

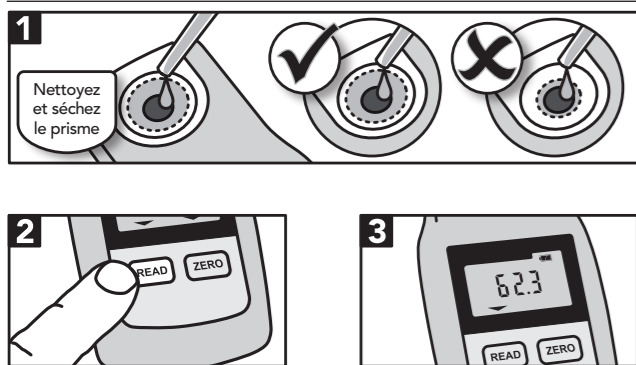
Installazione delle batterie



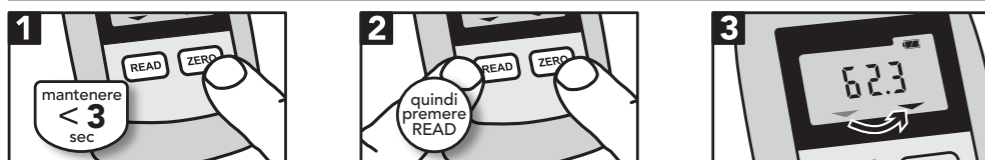
Calibrazione zero



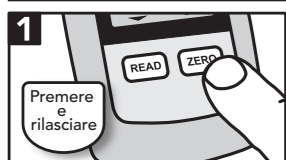
Effettuazione di una lettura



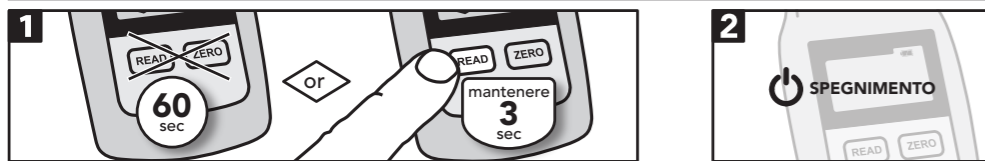
Cambio della scala di misurazione



Visualizzazione della temperatura di misurazione



Spegnimento



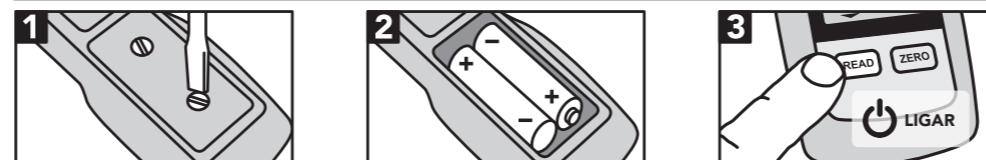
Dettagli sul produttore



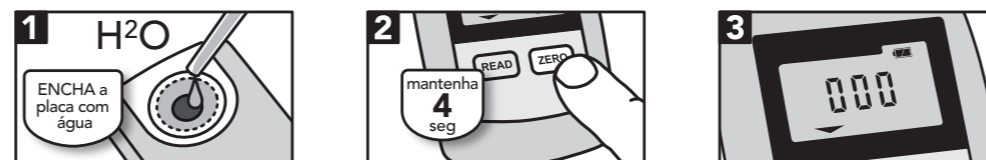
Guia de Início Rápido

User Guide Code: 38-420/01PA

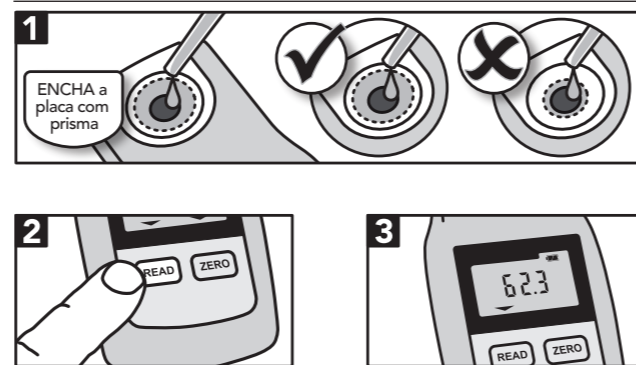
Instalando as baterias



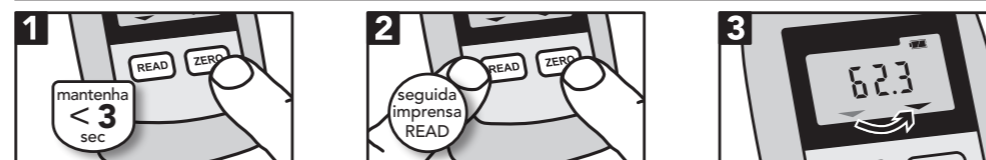
Calibragem zero



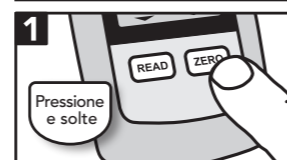
Fazendo uma leitura



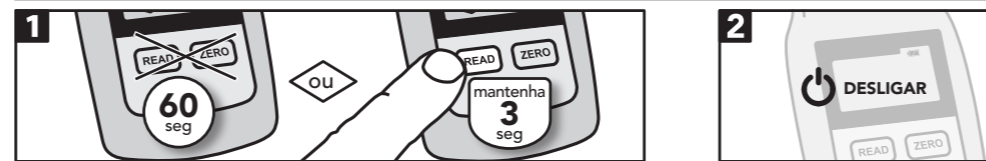
Alterando a escala de medida



Visualizando a temperatura da medição



Desligando

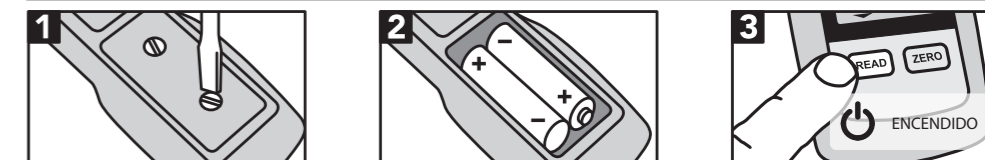


Detalhes do fabricante

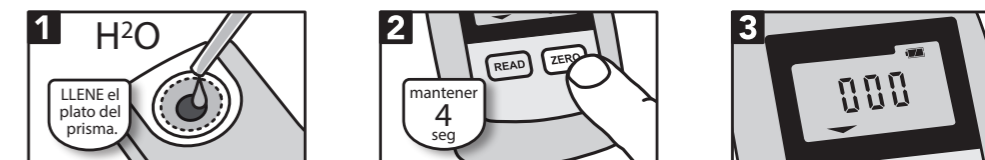


Guía de inicio rápido

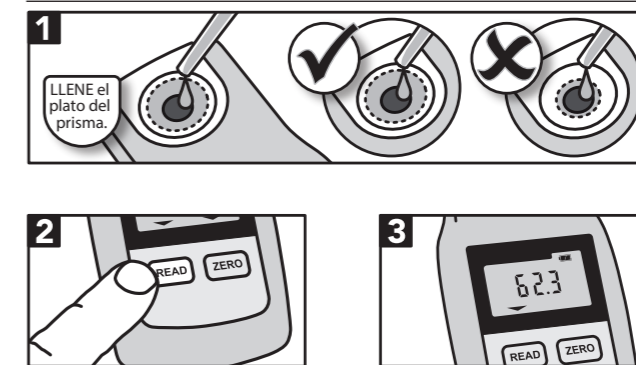
Cómo poner las pilas



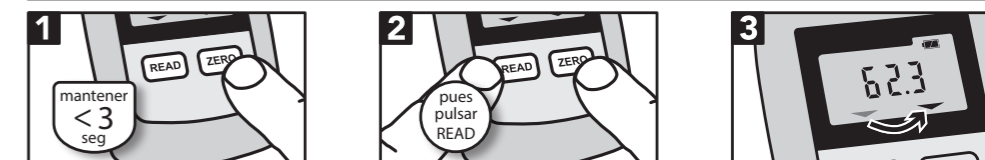
Calibración de cero



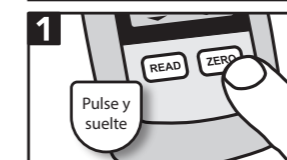
Realizar una lectura



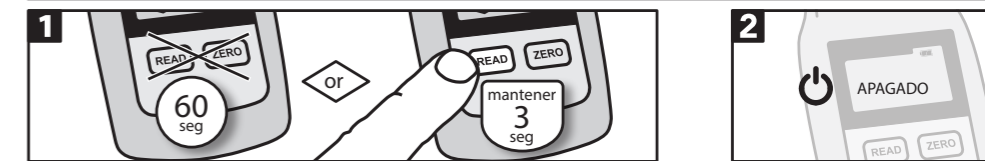
Cambio de escala de medición



Cómo mostrar la temperatura de medición



Apagado



Datos del fabricante

